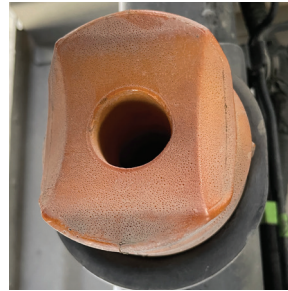


Installed Items : RubberShox Universal Bump Stops Model: UB1+UB3

**IMPORTANT NOTICE:** RUBBERSHOX INSTALLERS SHOULD APPLY COMMON AUTOMOTIVE SAFETY PRACTICES WHEN RAISING, LOWERING AND WORKING ON VEHICLES, ALWAYS WEARING SAFETY GLASSES, USING BOTH HYDRAULIC JACK AND JACK STAND DURING THE INSTALLATION. We recommend that this installation be done by a professional or person with auto mechanical knowledge. RubberShox Universal Bump Stops are designed to work with original factory springs only. These instructions are general guide line. RubberShox assumes no liability for actual installation process. RubberShox does not recommend exceed the maximum load recommended by vehicles manufacturer (GVWR)



Unload ground clearance: 18 ¾" Rear and 17" front.

**Original Bump Stop** – Cheap synthetic rubber and very tiny. Frame will not hit the bump stop even with 1 ton loading. This will affect the driving condition and cause fish tail in highway speeds.

## Installation Procedure:

**Note:** The screw on the original bump stop is slant.

**Installation tip:** you can install the screw first into UB13. When you screw onto the truck frame, please tilt the bump stop to align with the treaded insert. Or you can secure the screw in the frame first then thread in the bump stop (tilt the bump stop to align with the tilt bolt).

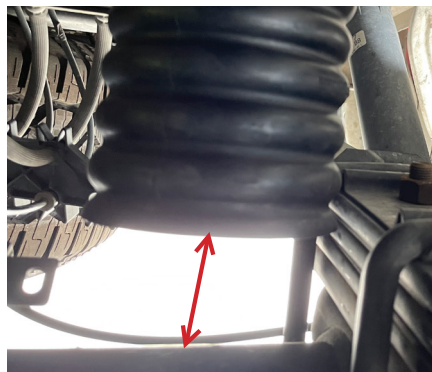


Original F150 factory bump stop VS RubberShox heavy duty natural rubber bump stop UB13

2000 lab loading on the truck bed. Ground clearance lower to 15 ¼".



Pick the shortest screw for F150 installation



UB13 will be the best choice for occasional loading and towing with F150 truck. Our UBS series bump stops are direct fit with all Ford F150 truck without needing any alternation or adapter. For constant loading or towing, please choose UB123 for best stability and support of the vehicle without damage your truck (frame hitting the axel).

UBS series will prevent lose control when loading over 1 ton or towing 1500 KG or above.

Please note: Due to the natural of the design of Ford F150 XL truck, UBS UB13 will act as a larger bump stop from stock and prevent fame hit with the axel, it will also act as buffer with heavy loading to reduce squatting and swaying.